

## Introduction:

Thank you for purchasing the Kupo Click Stands. To ensure your safety as well as the proper use and maintenance of your Kupo Click Stands, it is important to carefully read and understand the information contained in this manual before using.

## Unpacking & Inspection

Open the shipping carton and verify that all equipment necessary to operate the system has arrived intact and make sure that there is no evidence of damage caused by transportation. If any equipment is missing or damaged please contact your nearest distributor immediately.

## Cautions:

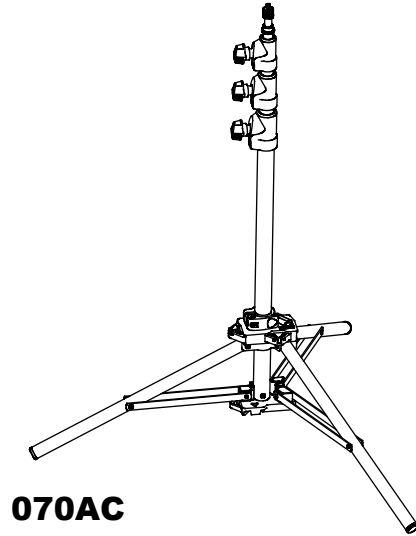
1. Light stand must be deployed on firm ground capable of supporting the weight of both load and stand.
2. Do not exceed the maximum load capacity.
3. Do not operate the stand at temperatures more than +60 degree C or less than -30 degree C.
4. It's recommended not to move stand with raised columns and a load.
5. Sand bags are recommended for increased stability and securing the stand. Place sand bag on the leg brace or on the stand leg.
6. Make sure everything is secure before proceeding.
7. Dry the product after using in wet conditions.
8. Use mild detergent and a soft cloth to keep the stands clean.
9. In the event of product defects, please contact your nearest Kupo authorized agent.

Should you require any further information, please contact your nearest distributor directly - we will be pleased to assist you.







[www.grip.com.tw](http://www.grip.com.tw)

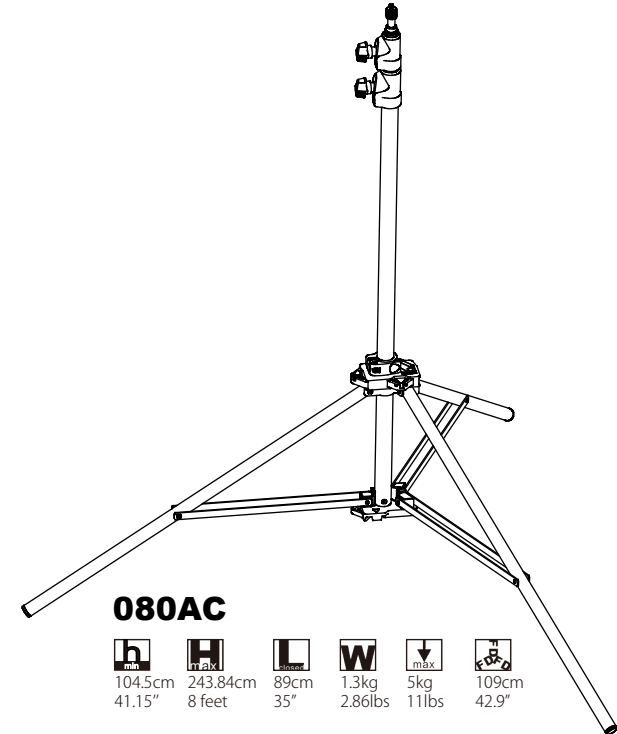
[www.kupogrip.com](http://www.kupogrip.com)

**KUPO**<sup>TM</sup>  
NEVER LET GO







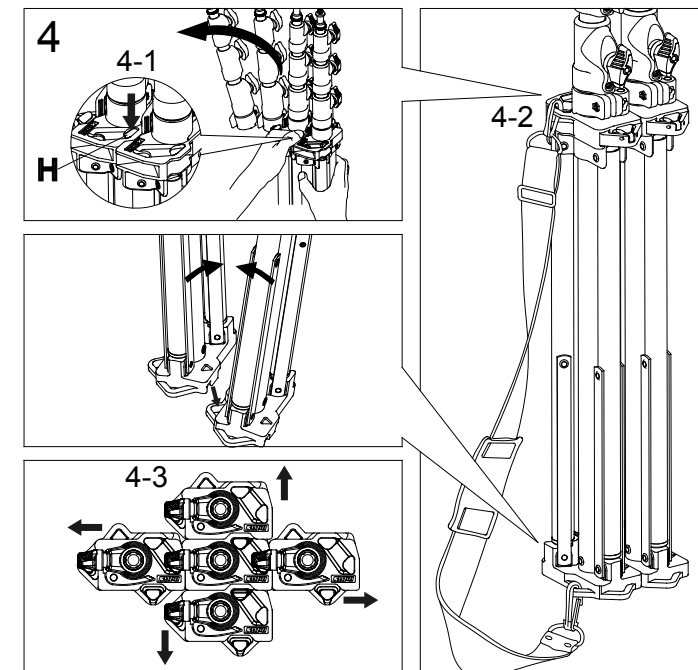
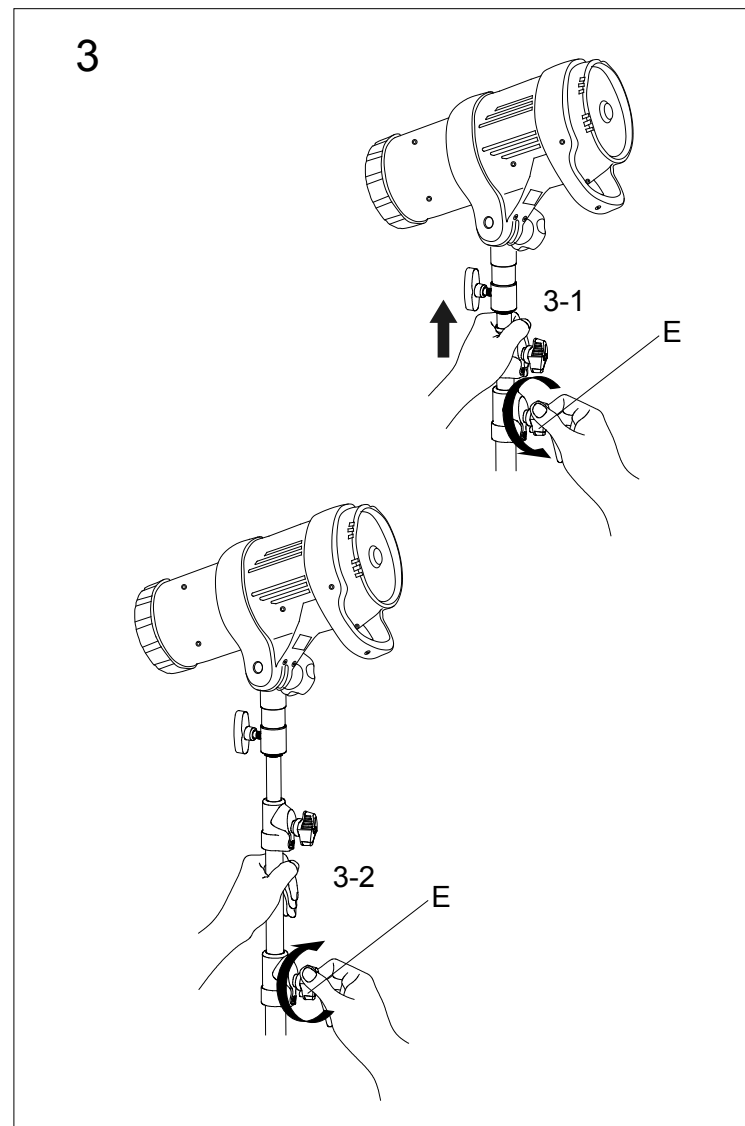
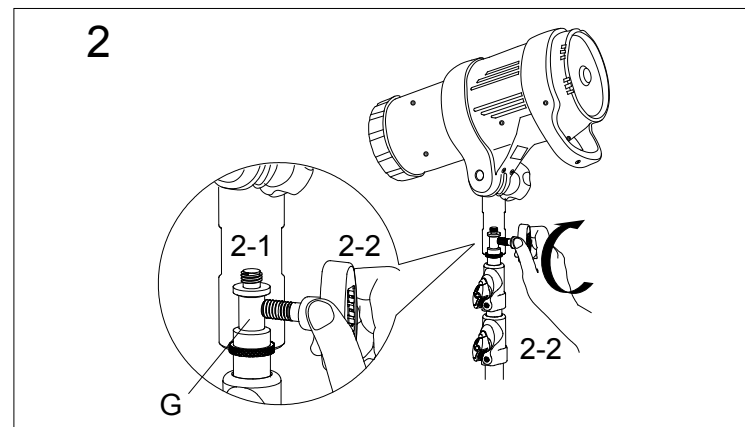
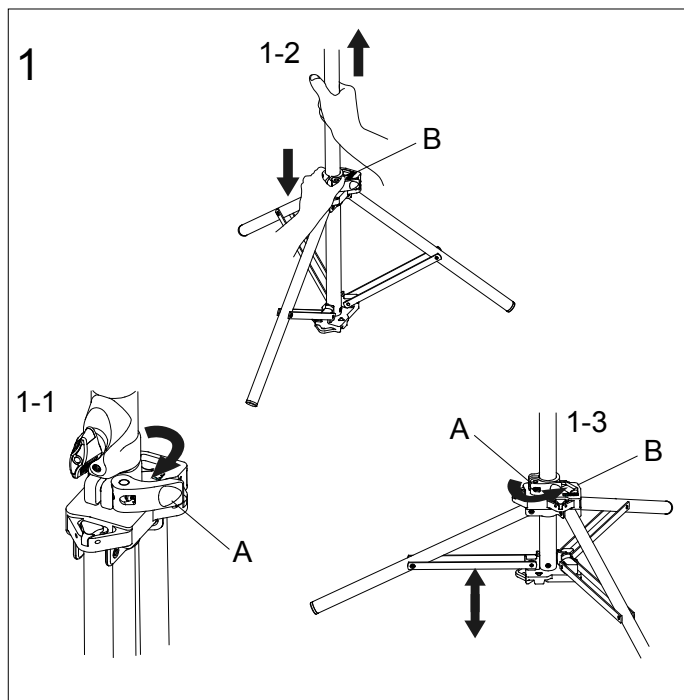
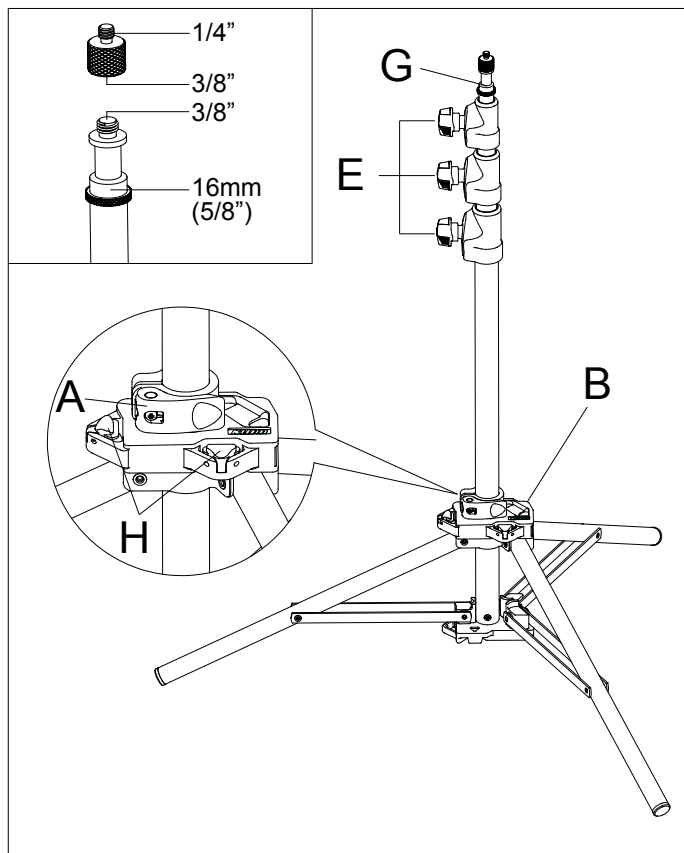
### 070AC

					
78.5cm	213.36cm	71cm	1.1kg	4kg	70cm
30.9"	7 feet	27.9"	2.42lbs	8.8lbs	27.56"



### 080AC

					
104.5cm	243.84cm	89cm	1.3kg	5kg	109cm
41.15"	8 feet	35"	2.86lbs	11lbs	42.9"



## Operation manual

### 1. Open the stand base:

1-1) Unlock the quick release clamp (A)

1-2) Press down on the upper casting (B) while holding the central column.

1-3) Position the leg struts parallel to the ground for maximum stability and lock the quick release clamp (A)

### 2. Stand top attachments:

2-1) Place your light with built-in baby receiver on top of the baby stand top (G).

2-2) Tighten your light to the top of the 5/8" stand mount.

### 3. Adjust the stand height:

3-1) Loosen the knob (E) and hold the column.

3-2) Position the light to the desired height and tighten.

### 4. Storage & transportation:

4-1) To store your stands use the clever interlocking mechanism to click them together. To lock and release press button (H)

4-2) Optional strap with two clasps can be attached on the plastic locking loops for easy transporting of a set of stands.

4-3) The unique four-way interlocking design provides numerous ways of carrying the stands together.